



FOR LEASE

Rooftop for Antennas

EastVan Medical, 1750 East 10th Avenue, Vancouver V5N 5K4



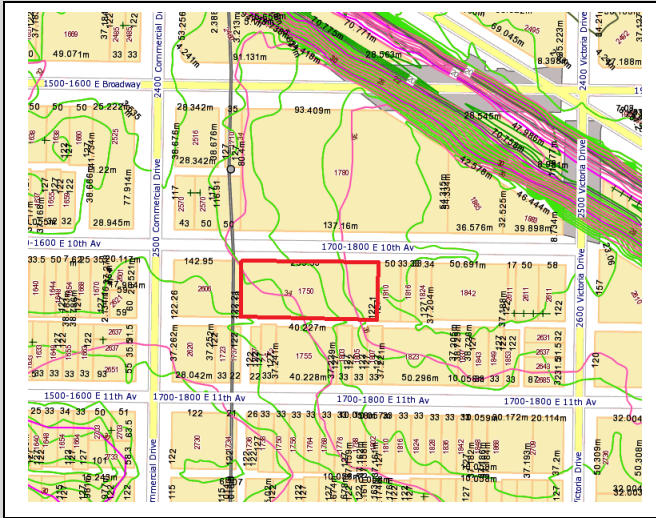
Latitude: 49° 15' 39.53"
Longitude: 123° 04' 22.75"

- Elevation above sea level: 182 ft.
- Traffic Count: 15,498
- V5N 5K4 Postal Count: 12,207
- Clear view lines
- 5 stories to a height of 50 ft
- Medical building
- South side mid block overlooking Safeway and W. Broadway.
- Serviced, easy street front access.
- Site Area: 36,621 sq ft
- At Sky-train interchange





East Van Medical Avenue, Vancouver V5N 5K4



Allodium Realty Advisors 459-409 Granville Street, Vancouver BC Canada V6C 1T2 604-340-2676 sfitzpatrick@allodium.ca allodium.ca

The information contained herein has been gathered from sources deemed to be reliable, but is not warranted as such and does not form any part of any future contract. This offering may be altered or withdrawn without notice at anytime.