



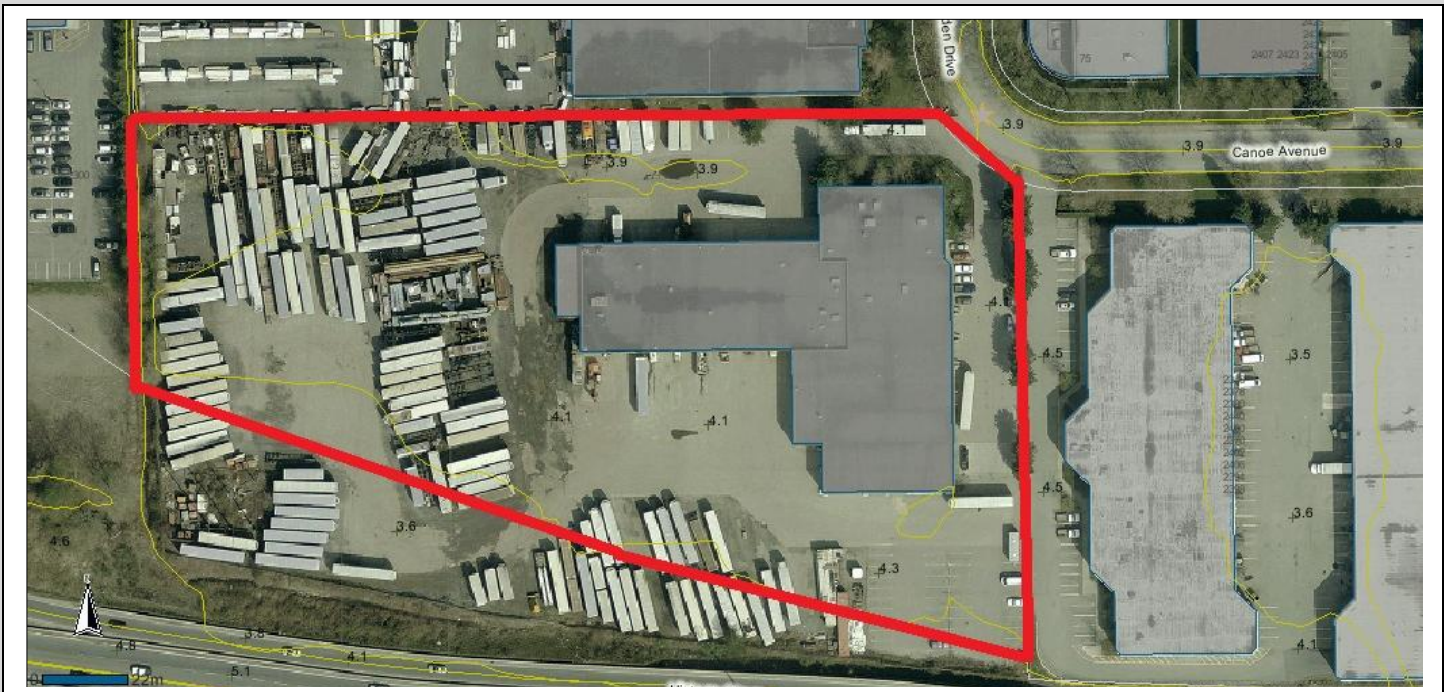
FOR LEASE
Rooftop for Antennas

70 Golden Drive, Coquitlam, BC



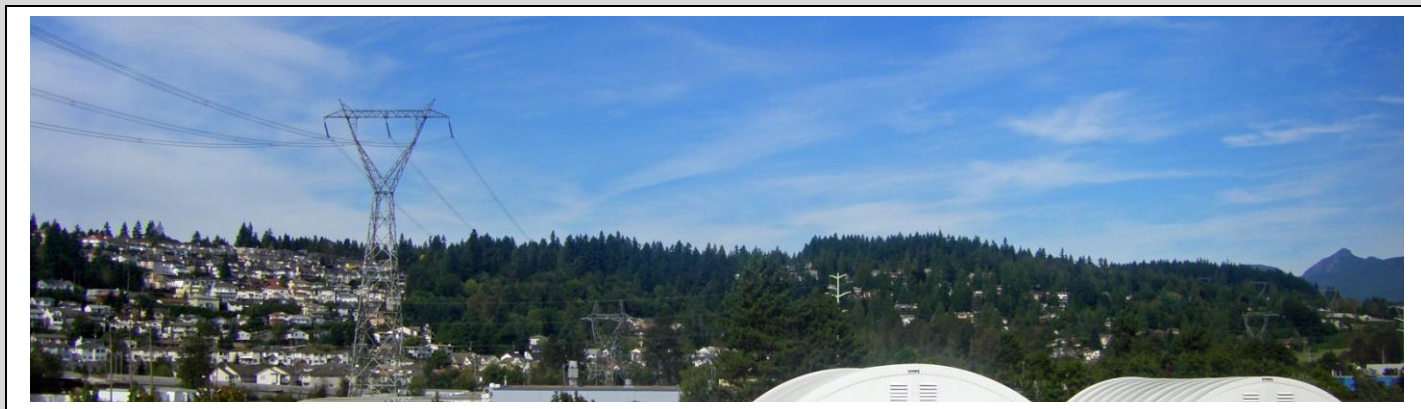
Latitude: 49.2298512
Longitude: -122.8244938

- Fronts the Trans Canada Highway.
- Clear view-lines.
- View of Port Mann Bridge.
- 30,000 sq. ft. rooftop
- 5.688 ac. level site.
- Between Lougheed Hwy/United Boulevard.
- Serviced and easy access
- Overlooking Fraser River.
- Elevation 21feet.
- V3K Postal Count: 11,559
- Coquitlam (2010) pop.126,594



alodium

70 Golden Drive,
Coquitlam, BC



Allodium Realty Advisors. 459-409 Granville Street, Vancouver BC Canada V6C 1T2 604-340-2676 sfitzpatrick@alodium.ca alodium.ca

The information contained herein has been gathered from sources deemed to be reliable, but is not warranted as such and does not form any part of any future contract. This offering may be altered or withdrawn without notice at anytime.